

lia sophia

SHARE THE LOVE OF JEWELRY®

Retiring Jewelry

Going, going, gone! Styles available through Sunday, July 27th...while quantities last.

p. 9



Mingle

(L54) \$34

p. 9



Green River
Green River (PE)

(445) \$32
(290) \$22

p. 9



Chit-Chat

(070) \$66

p. 9



Eclectic

(L42) \$88

p. 10



Amour

(341) \$36

p. 10



Saucy

(L41) \$88

p. 11



Razzabell
Razzabell (PE)

(082)
(195)

p. 12



Juicy

(L44) \$72

p. 12



Sorbet (PE)
Sorbet Necklace

(280) \$22
(330) \$52

p. 12



Misty Rose (PE)
Misty Rose

(239) \$26
(L51) \$40

p. 13



Presto

(172) \$24

p. 13



Serendipity
Serendipity (PE)

(492) \$32
(104) \$30

p. 13



Tribeca

(477) \$82

p. 14



Beaumont

(N53) \$110

p. 14



Mantra

(284) \$24

p. 14



Tequila Sunrise

(634) \$80

p. 14



Taos
Taos (PE)

(480) \$52
(182) \$36

p. 15



Sanibel

(N70) \$78

p. 15



Fossil (350) \$48

p. 16



Iconic (L31) \$34

p. 16



Verdana (034) \$54

p. 16



Verdana (PE) (245) \$50
Verdana Slide (577) \$38

p. 17



Monticello (662) \$66
Galactic (543) \$66

p. 17



Outshine (561) \$58

p. 17



Tapestry (529) \$36

p. 17



Star Light (541) \$28

p. 17



Tiered (531) \$38

p. 18



Abracadabra (244) \$42

p. 18



Lisa (B71) \$72

p. 18



Bedrock (B25) \$68
Grape Chill (597) \$30

p. 18



Epiphany (556) \$42

p. 19



À La Mode (031) \$130

p. 19



À La Mode Slide (562) \$48
À La Mode (PE) (235) \$42

p. 20



Lucky (665) \$40

p. 20



Domino (515) \$28

p. 20



Denim Dreams (579) \$30

p. 20



Mélange (585) \$40

p. 20



Mélange (046) \$98

p. 20



Deja Vu Reversible (540) \$36

p. 21



Peachy Keen (663) \$66

p. 21



Luster (547) \$38

p. 21



Zodiac (528) \$38

p. 21



Flowerbox (509) \$48

p. 21



Ambrosia (580) \$32

p. 21



Daisy (753) \$46

p. 22



Entourage (544) \$66

p. 22



Matador Reversible (595) \$54

p. 22



Double Dip (026) \$68

p. 22



Encore Reversible (L65) \$64

p. 22



Plum Fizz (512) \$30

p. 22



Overlay (653) \$94

p. 23



Frenzy (643) \$58

p. 24



Debbie (L59) \$76

p. 24



Marvel (L09) \$48

p. 24



Stellar (231) \$66

p. 24



Bombay Matte Gold (B14) \$66
Bombay Matte Silver (B15) \$66

p. 25

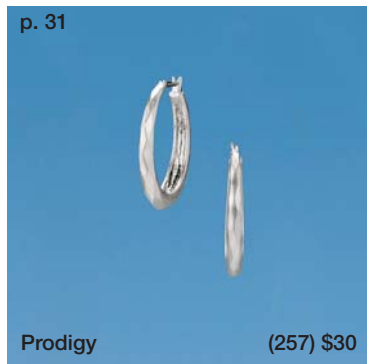


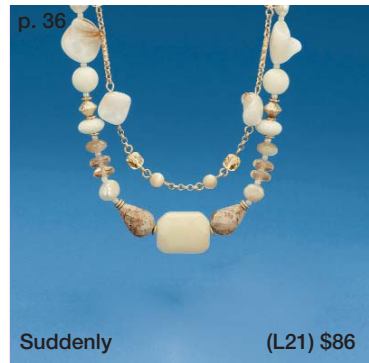
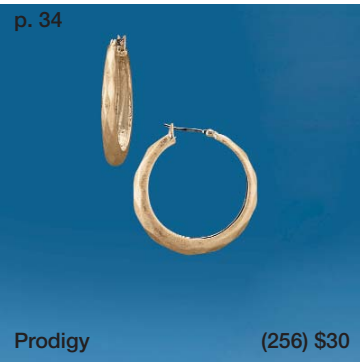
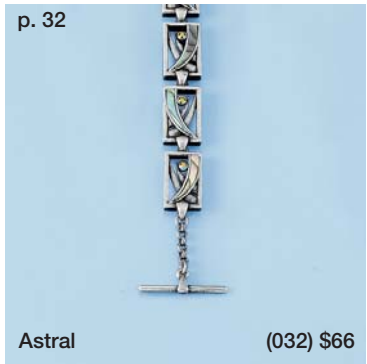
Muse (PE) (287) \$28
Muse (B73) \$110

p. 24



Muse (625) \$48





p. 39

Lime Light (B40) \$125

p. 40

Maestro Journey (158) \$30 (052) \$78

p. 40

Notorious (273) \$88

p. 41

Toffee (314) \$48 Toffee (PE) (205) \$30

p. 41

Toffee (781) \$66

p. 42

Duo (078) \$22

p. 42

Turnover Reversible (N18) \$23

p. 43

Flowerplay (L25) \$21

p. 43

Lei (E95) \$20

p. 43

Social Butterfly Posie (N10) \$19 (494) \$22

p. 43

Fairplay (067) \$22

p. 43

Bit Of Heaven (465) \$20 Behold (335) \$23 Guiding Light (N75) \$24

p. 43

Flight (458) \$21 Keepsake (B57) \$23

p. 43

Cutesy (861) \$22 Sprinkles (L37) \$21

p. 44

Zen (042) \$98

p. 44

Minted (PE) (814) \$26 Minted (L55) \$38

p. 44

Mariposa (554) \$38

p. 44

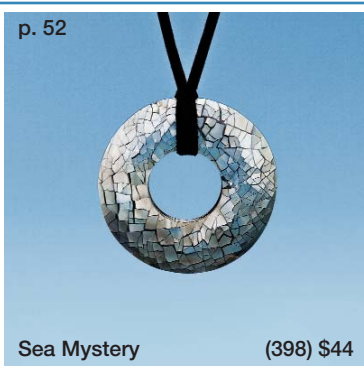
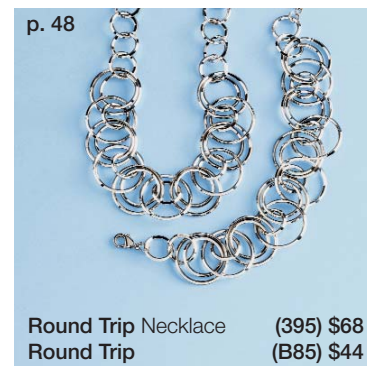
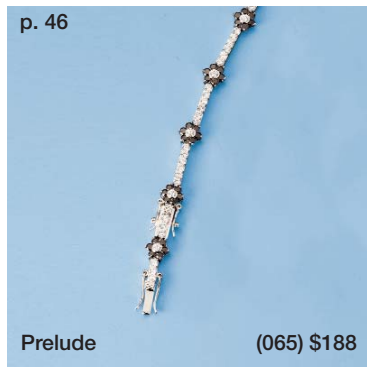
Ooh-La-La (688) \$66 Pearl Talk (363) \$130

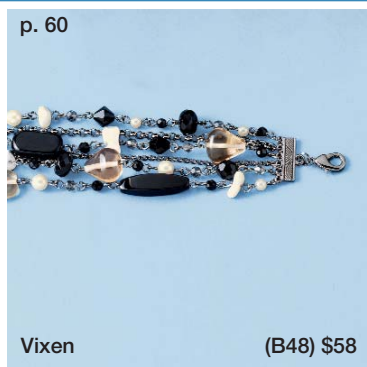
p. 45

Opulence (PE) (219) \$30 Opulence (L27) \$66

p. 45

Bittersweet (PE) (171) \$22 Bittersweet (L40) \$36





lia sophia

Andrea Surratt
847-468-1550

























andrea4jewelry@yahoo.com
www.liasophia.com/andrea

2008 Spring/Summer Retiring Kiam Collection

Going, going, gone! We are saying goodbye to the whole Kiam collection in order to make room to debut a new Kiam collection in the upcoming 2008 Fall/Winter catalog.

The last chance to order is Sunday, July 27th.

Quantities limited while supplies last.

<p>Mother of Pearl Necklace 434 - \$150, bonus \$30</p> 	<p>Blake Necklace 437 - \$68</p> 	<p>Mr. 1Derful Necklace 435 - \$40</p> 	<p>Alexander Bracelet B94 - \$78</p> 	<p>Jenny Necklace 457 - \$198, bonus \$45</p> 
<p>Oval Earrings 819 - \$34</p> 	<p>Jenny Bracelet B92 - \$210, Bonus 45</p> 	<p>Two-Tone Stack Ring (set of 2) 696 - \$86</p> 	<p>Crystal Tear Necklace 432 - \$68</p> 	<p>Matte Gold Ring 695 - \$42</p> 
<p>Criss-Cross Earrings 809 - \$44</p> 	<p>Nikki Bracelets (set of 3) B95 - \$145, bonus \$30</p> 	<p>Cut Crystal Collar Necklace 452 - \$180, bonus \$30</p> 	<p>Topaz Dangle Earrings 885 - \$58</p> 	<p>Pave' Ball Earrings 816 - \$40</p> 
<p>Wave Crystal Ring 698 - \$76</p> 	<p>Lia Necklace 438 - \$48</p> 	<p>Caleigh E: 875 - \$58 N: 417 - \$48</p> 	<p>Sophia B: B93 - \$120, bonus \$20 E: 804 - \$115, bonus \$20</p> 	<p>Lisa Necklace 450 - \$210, bonus \$45</p> 
<p>Lisa Earrings 808 - \$58</p> 	<p>Dangle Earrings 882 - \$56</p> 	<p>Robin Ring 699 - \$48</p> 	<p>Robin Bracelet B91 - \$115, bonus \$20</p> 	<p>Elena B: B82 - \$180, bonus \$30 E: #876 - \$42 N: 418 - \$188, bonus \$45</p> 